

**MINUTES OF THE  
MEETING  
PRESBYTERY OF THE DOWNS  
29<sup>th</sup> – 31<sup>st</sup> July 2022  
WILSONTON UNITING CHURCH**

**ATTENDANCE**

Rev Yvonne McRostie	Presbytery Minister	Allison Kahler	Presbytery Secretary
Rev Adam Tipple	Presbytery Chair	Jenny Noble	Treasurer
Rev Willie Liebenberg	Central Downs	Cliff Forrester	Highfields
Kath Warner	Eastern Downs	Hendrika DeNys	Cambooya
Ian Darnell	Warwick/Killarney	Ian Williams	Dalby
Lyn Kajewski	Maranoa	Barbara Kerslake	Wilsonton
Rev Rob Callow	Crows Nest	Daphne Webster OAM	Oakey
Rita Wyse	Highfields	Rev Nathan Barton	Scots PGC
Annie Baker	Middle Ridge	Warren Midgley	PRC
Sharon Baker	Middle Ridge	Barbara Betts	Blue Care
Rev Jenny Potter	Hospital Chaplain	Rev Kaye Ronalds	Granite Belt
Kerry Andrews	Lifeworks	Karen Gaskell	Chinchilla
Sarah Hamlyn Harris	Granite Belt	Sue Case	Crows Nest
Jan Waller	Goondiwindi	Les Adams	St Stephens
Bobbie Perkins	Goondiwindi	Naomi Bell	Highfields

**APOLOGIES**

Beryl York	Maranoa	Kaye Hacker	Chinchilla
Karen Dunmill	Goondiwindi	Rev Ansie Liebenberg	Warwick/Killarney
David Cahill	Warwick/Killarney	Rev Kate Fraser	Middle Ridge
Ben Bryce	Cambooya		

## **FRIDAY 29<sup>th</sup> July 2022**

Opening Worship

### **NEW MEMBERS AND VISITORS**

Welcome to new Members of Presbytery - Barbara Kerslake (Wilsonton), Rev Nathan Barton (Scots PGC), Sue Case (Crows Nest) Ian Darnell (Warwick/ Killarney)

Welcome to Visitors – Scott Guyatt, Peter Armstrong, Steve Drinkall,

**2022.07.01** Resolved to associate Scott Guyatt, Peter Armstrong, Steve Drinkall, with Presbytery

**Consensus**

**2022.07.02** resolved to adopt the agenda

**Consensus**

### **ADOPTION OF MINUTES OF PREVIOUS MEETING**

**2022.07.03** Resolved to adopt the minutes of the Presbytery Meeting held at Middle Ridge dated 22<sup>nd</sup> April 2022

**Consensus**

**2022.07.04** Resolved to receive the Correspondence Register

**Consensus**

**2022.07.05** Resolved to receive the distributed reports.

**Consensus**

### **GENERAL PROPOSAL 1 BLUE CARE**

**2022.07.06** Resolved to move Presbytery to a private sitting to discuss the proposal

**Consensus**

**2022.07.07** Resolved That the Presbytery has an open and honest conversation regarding concerns about the operation and ethos of Blue Care. **Consensus**

Discussion on proposal held in confidence

**2022.07.08** Resolved Presbytery issue an Expression of Concern seeking a response to Blue Care senior management and the board of Uniting Care Queensland, outlining the concerns and backed by examples. **Consensus**

**2022.07.09** Resolved That the Presbytery invites representatives from Blue Care and Uniting Care Queensland to discuss these concerns at the November gathering of the Presbytery. **Consensus**

Rob Callow, Barbara Betts & Sharon Baker to draft a letter to be sent via Standing Committee for review and forwarding to Blue Care

## **SATURDAY 30<sup>th</sup> July 2022**

In the absence of the Presbytery Chair the morning sessions of the Presbytery meeting were chaired by Rev Rob Callow

### **Worship**

Led by Wilsonton congregation

### **BIBLE STUDY**

Peter Armstrong

2 Corinthians 4: 8-10 13-19

### **SALTBUSH PRESENTATION**

Rev Tim Jensen gave a presentation the Saltbush model of ministry

**2022.07.10** Resolved to associate Michelle Richardson, Paul Wetzig, Alan Ward, Gordon Gilmour, Margaret Donkin, Susan Popple with Presbytery **Consensus**

### **Standing Committee Report Resolution**

**2022.07.11** That all members of the Pastoral Relations Committee, the Property Committee and the Standing Committee who are not otherwise members of Presbytery, be co-opted as Presbytery members as per regulation 3.3.4 (f) (i), until their position on these committees lapses. Currently those people are: Ian Darnell (Property Committee, Warwick-Killarney) Gordon Gillmore (Property Committee, Lifeworks) Warren Midgely (PRC, Eastern Downs) David Prestridge (PRC, Lifeworks) Cliff Forrester (PRC, Highfields)

**Consensus**

## **FIXED ORDERS OF THE DAY**

### **PRC**

That the Presbytery receive the application of Mrs Naomi Bell for Synod Selection Panel and under Reg 2.3.2.3(b) consider its commendation by written ballot.

Naomi gave a presentation to the Presbytery. This followed by ballot

## **Ballot**

**2022.07.12** Resolved to appoint Daphne Webster, Scott Guyatt Scrutineers **Consensus**

## **IIM Crows Nest**

Members of the IIM transition team gave an update on the progress of the IIM in the Crows Nest district

## **Results of Ballot**

As per Reg 2.3.2.3(b) the requirement of a two thirds majority was met.

**2022.07.13** Resolved to destroy the ballot papers **Consensus**

## **REPORTS**

### **Recommendations from Standing Committee**

**2022.07.14** That Rev Marius Kruger be appointed as the Presbytery Representative to the Synod Mission Collaboration and Coordination Committee (MC3). **Consensus**

**2022.07.15** That the Presbytery Property Committee that has been appointed by the Standing Committee, take up responsibility for property matters from 31st July 2022. **Consensus**

**2022.07.16** That Presbytery approves the sale of the properties at Cunnamulla and Wandoan and requests the Presbytery Property Committee investigate the Purchase of a property in Charleville to house the bush chaplain, Cunnamulla Burke & Wills Remote Area Ministry. **Consensus**

### **Presentation for Treasurers Report**

Jenny Noble gave a presentation regarding the recent Presbytery Treasurers meeting. For noting it is strongly recommended the Congregations consider moving to fiscal year reporting as opposed to calendar year reporting.

### **Recommendations from Presbytery Minister Report**

Annie Baker noted a conflict of Interest regarding the recommendation and did not participate in the voting process

**2022.07.17** Presbytery support the further development of a 'Saltbush' model of ministry (gathering the scattered communities) as a way of resourcing and encouraging discipleship and faith development in regional, rural and remote areas by:

- a. Providing up to \$40000 of funds for staffing, travel, equipment and consultation;
- b. Engaging with NewLife Digital Pastor and other expertise;
- c. Form a network of people across the Presbytery, and even beyond the Presbytery to engage and experiment;
- d. Designing a platform that includes digital, face to face engagement, distribution through a mailing system, a network of people and resources and training facilities.
- e. Presenting the platform design to the November Presbytery including a funding proposal for the next 3 years. **Consensus**

### **Recommendations from the Pastoral Relations Committee Report**

**2022.07.17** That the Presbytery: a. approves the New Placement - Bottle Tree Remote Area Ministry.  
b. approve the Placement Description for Bottle Tree Remote Area Ministry. **Consensus**

**2022.07.18** Develop an MOU in consultation with the Maranoa Parish and the communities of the Bottle Tree Remote Area Ministry. **Consensus**

**2022.07.19** That the Presbytery approves the Placement Description for Cunnamulla Burke and Wills Remote Area Ministry. **Consensus**

2022.07.20 That the Presbytery endorse the exploration and formation of a Remote Area Ministry Council. **Consensus**

**2022.07.21** That the Presbytery advise the Chinchilla Uniting Church Congregation that:  
a. the Presbytery will accept the powers and responsibilities of the Church Council as per Constitution 70 (g) only for a period of 3 months; b. it will encourage the congregation to prayerfully discern a way forward by providing practical training, support, and pastoral care; and c. receive an update at the November Presbytery meeting on the Life and Witness of the Chinchilla Congregation. **Consensus**

### **Discipleship Working Group**

Paul Wetzig gave an update of the progress of the Synod working group and what they have discovered and what they have been working on

### **Connect 100/ Uniting Care Report**

Michelle Richardson gave a presentation of some of the training that is available via Uniting Care

### **Mission Moments**

Sharing from the Presbytery one what has been happening in their congregations.

**Next Meeting**

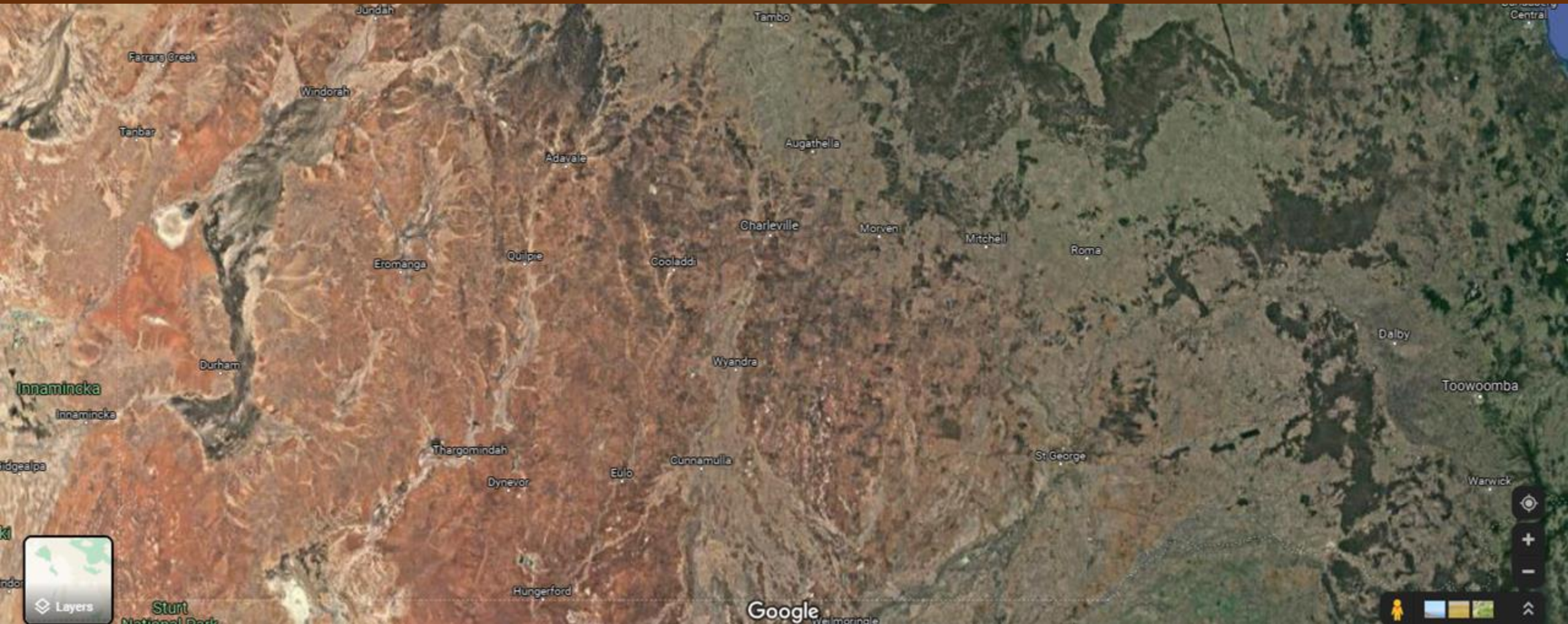
Pittsworth Uniting Church - 4<sup>th</sup>- 6<sup>th</sup> November

**SUNDAY 31<sup>st</sup> July 2022**

Worship with the Wilsonton Congregation

DRAFT

# What do we hear the Spirit saying to us (Downs Presbytery) about serving the Congregations?





# Just do it...

Tired....

Overwhelmed...

Reflective...

Adaptive...

Resilient...







Of Droughts And Flooding Rains (Australian Story - 5 min version)

Press **Esc** to exit full screen



Share

# Slowing the water...

MORE VIDEOS



0:00 / 6:25



YouTube





Adapting...



*“The most difficult part is to read the landscape... and knowing how to intervene.”*

Understanding change makes a difference?

## 2 Corinthians 4:8-10, 13-19

We are pressed on every side by troubles, but we are not crushed. We are perplexed, but not driven to despair. We are hunted down, but never abandoned by God. We get knocked down, but we are not destroyed. Through suffering, our bodies continue to share in the death of Jesus so that the life of Jesus may also be seen in our bodies.

But we continue to preach because we have the same kind of faith the psalmist had when he said, “I believed in God, so I spoke.” We know that God, who raised the Lord Jesus, will also raise us with Jesus and present us to himself together with you. All of this is for your benefit. And as God’s grace reaches more and more people, there will be great thanksgiving, and God will receive more and more glory.

That is why we never give up. Though our bodies are dying, our spirits are being renewed every day. For our present troubles are small and won't last very long. Yet they produce for us a glory that vastly outweighs them and will last forever! So we don't look at the troubles we can see now; rather, we fix our gaze on things that cannot be seen. For the things we see now will soon be gone, but the things we cannot see will last forever.



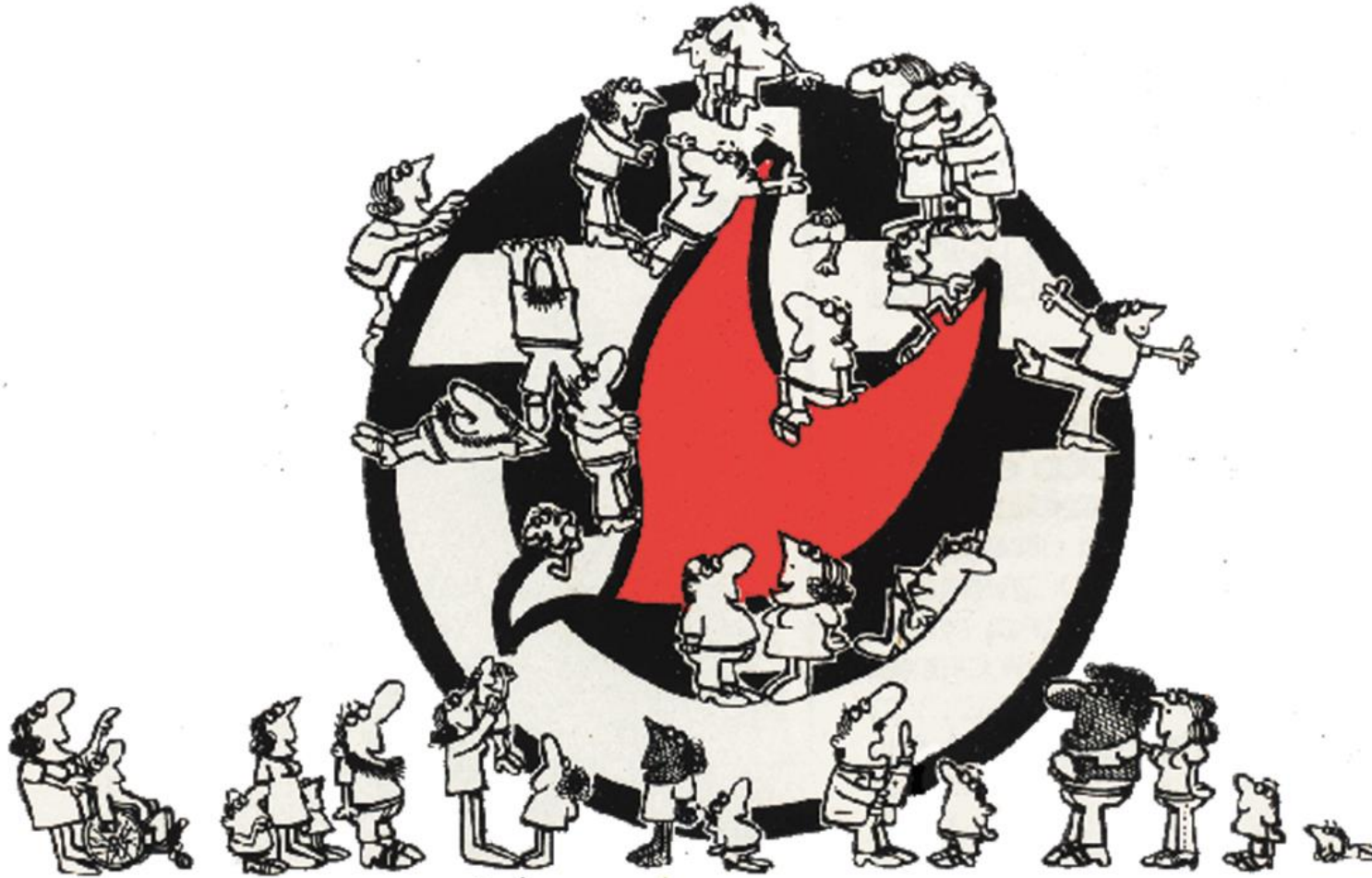
Choose and discuss a...

**WORD** or *phrase*

**sentence**



# The Congregation





The Uniting Church in Australia

The Presbytery of the Downs

HOME

ABOUT

PEOPLE

CHURCHES

CHAPLAINCY

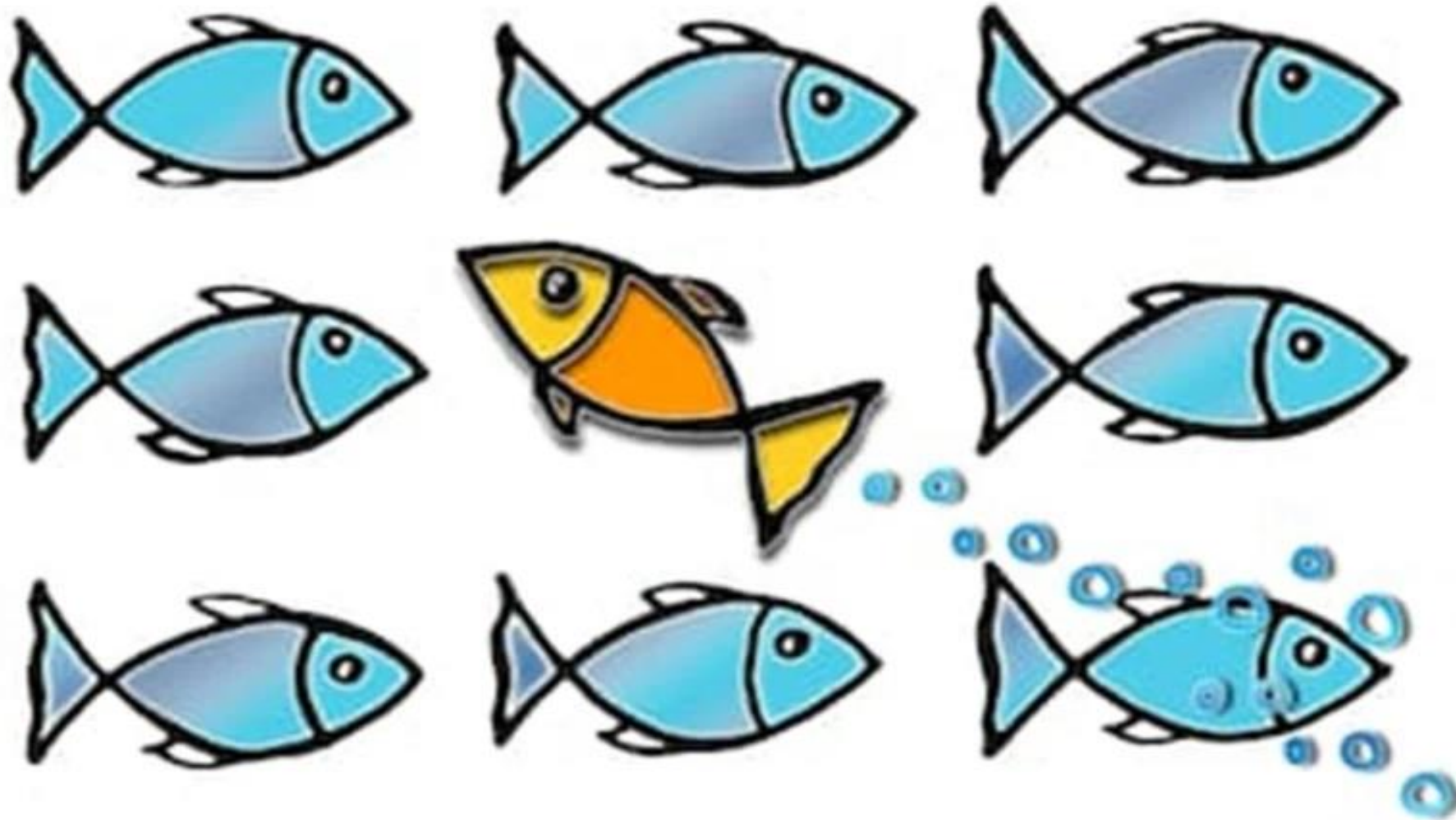
RESOURCES

UPCOMING EVENTS

CONTACT

Living waters for a thirsty land

**The Presbytery**



HOLY CATHOLIC...

SET APART TOGATHERING





*seasons*

formed







revelation



energise





create



plant





choices



**CHANGES  
AHEAD**

signs



**build**





*restore*





finish

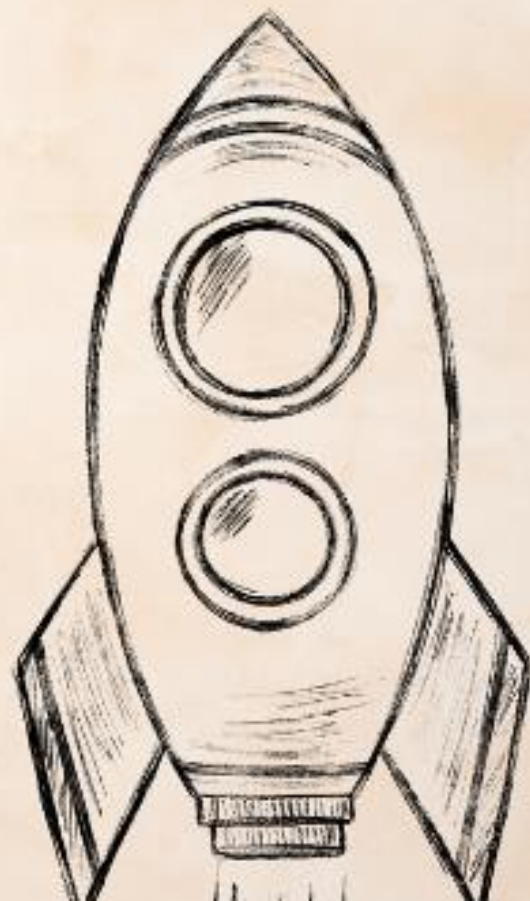
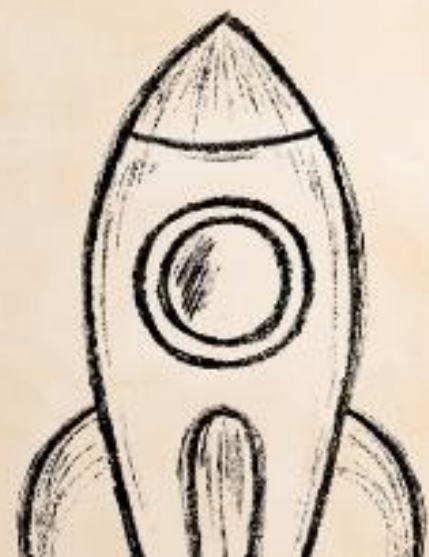


An old, dark wood upright piano is repurposed as a planter box. The piano's lid is open, and the interior is filled with soil and various green plants, including tall grasses and leafy herbs. The piano is positioned against a brick wall. To the left, a decorative, tiered metal planter holds more greenery. To the right, a black cabinet with gold-colored decorative panels is partially visible. The word "repurpose" is written in a white, cursive font across the bottom of the piano.

*repurpose*



*imagine*





APOSTOLIC...  
SENT TOGETHERING



**servant**



gardener





# builder



A young woman with curly brown hair, wearing a dark blue blazer over a white top, is smiling warmly at the camera. She is in the foreground, and the background is a blurred office setting with several other people sitting at desks.

manager



fool



# Parent

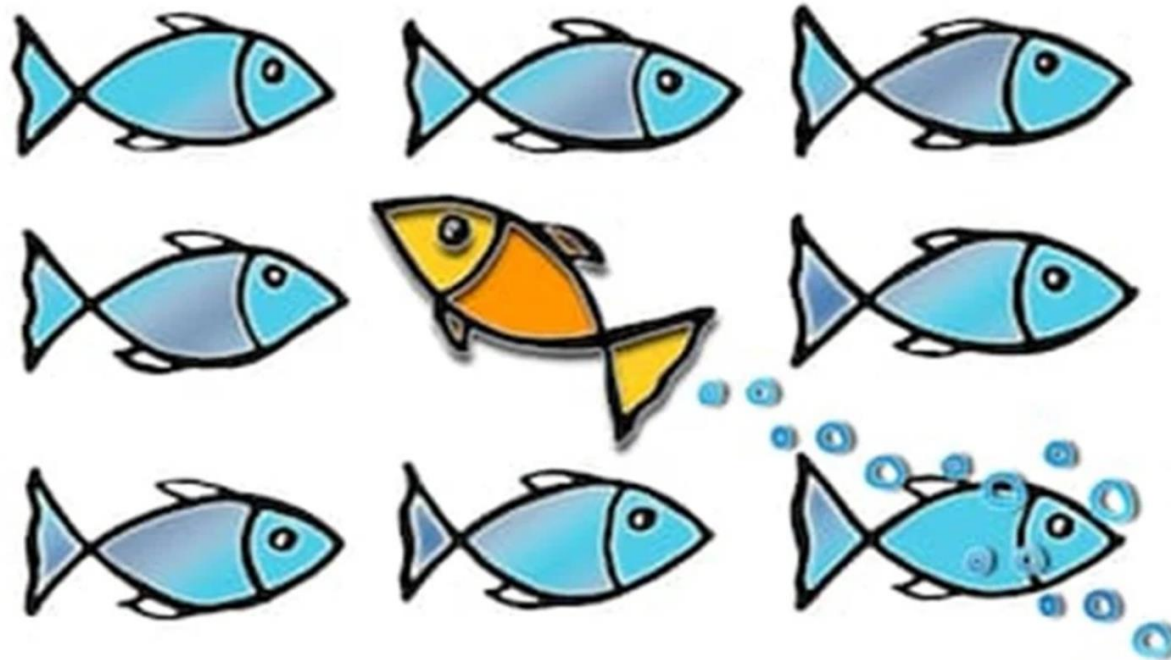




HOLY CATHOLIC...

SET APART

TOGTHERING



APOSTOLIC...

SENT

TOGTHERING



In small groups reflect on being set apart and sent...togethering by having conversations that emerge when you bring these two aspects together:

## **HOLY CATHOLIC + APOSTOLIC**

Be attentive to what the Spirit may be saying to you about the Presbytery and your congregation?



What is the one thing you can offer to the Presbytery to help encourage, bear the burdens, and exhort congregations?

